

## APPLICAZIONI

Elettropompe universali per applicazioni civili ed industriali, per impianti di lavaggio ad alta pressione, per l'irrigazione, l'agricoltura, impianti sportivi, per fontane e per movimentazione di liquidi moderatamente aggressivi privi di sostanze solide o abrasive.

## APPLICATION

Universal pumps for domestic or municipal water supply systems, for clean non-explosive liquids without solid or abrasive substances, for agricultural irrigation and sports application, for civil and industrial use, boiler feeding and condensate systems and for high pressure washing plants.

### LIMITI D'IMPIEGO

- Temperatura liquido da 0°C a 110°C (max)
- Temperatura ambiente fino a 40° C
- Pressione max. d'esercizio 25 bar

### OPERATING CONDITIONS

- Temperature of liquid from 0°C to 110°C (max)
- Ambient temperature max to 40°C
- Max. working pressure 25 bar

### MOTORE

- Motore elettrico ad induzione a (n = 2900 min<sup>-1</sup>) IM V1 (IEC 34-7)
- Isolamento Classe F
- Protezione IP 55

### MOTOR

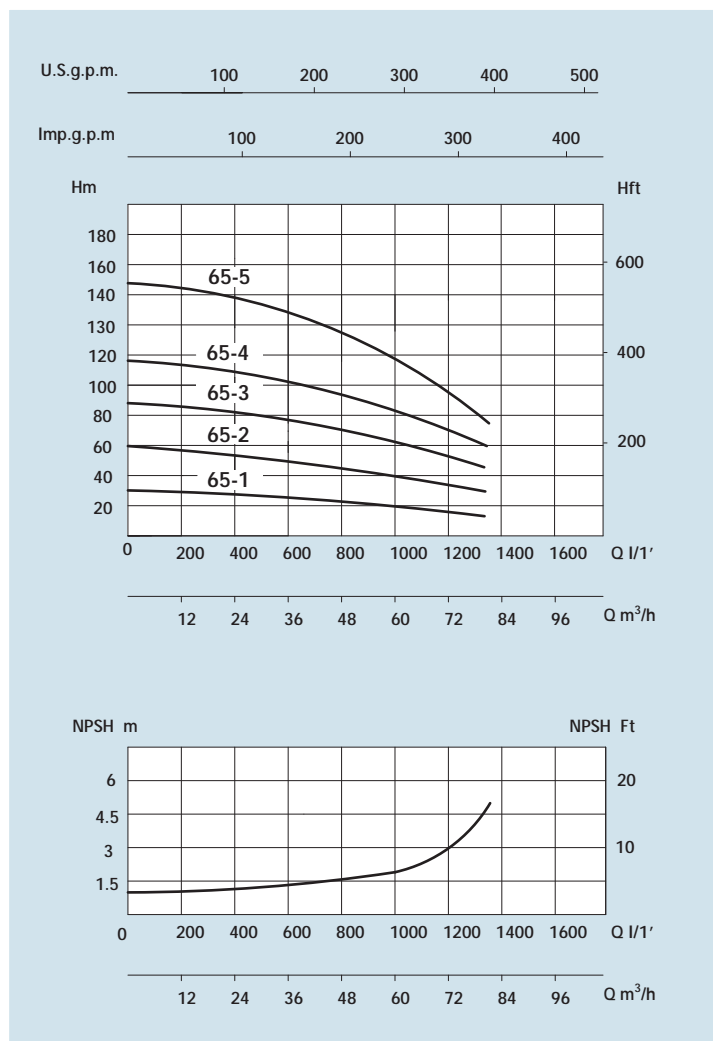
- Electric standard motor (n = 2900 min<sup>-1</sup>) IM V1 (IEC 34-7)
- Insulation Class F
- Protection IP 55

### MATERIALI

- Corpo aspirazione Acciaio Aisi 304
- Corpo mandata Acciaio Aisi 304
- Girante Acciaio Aisi 304
- Camicia pompa Acciaio Aisi 304
- Controflange Acciaio Aisi 304
- Coperchio superiore Acciaio Aisi 304
- Coperchio inferiore Acciaio Aisi 304
- Albero motore Acciaio Aisi 303
- Tenute meccaniche Grafite/Silicio

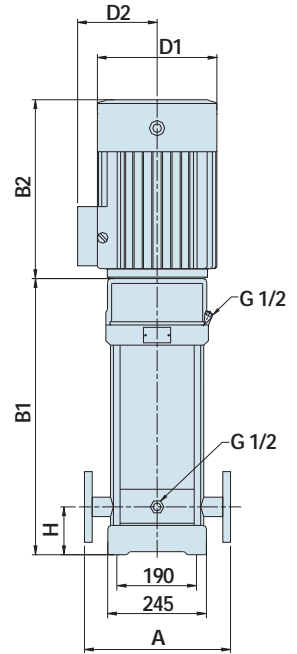
### MATERIALS

- Suction casing Stainless Steel Aisi 304
- Delivery casing Stainless Steel Aisi 304
- Impeller Stainless Steel Aisi 304
- External jacket Stainless Steel Aisi 304
- Counterflanges Stainless Steel Aisi 304
- Upper cover Stainless Steel Aisi 304
- Lower cover Stainless Steel Aisi 304
- Pump shaft Stainless Steel Aisi 303
- Mechanical seal Silicon/Graphite

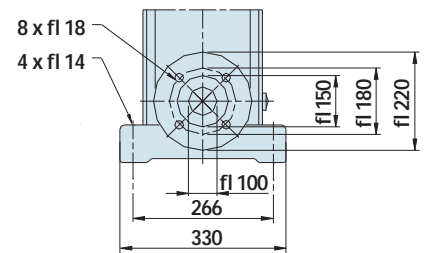


## DATI TECNICI - TECHNICAL DATA

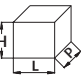
TIPO - TYPE	POTENZA NOMINALE NOMINAL POWER		AMPERE	Q = PORTATA - CAPACITY									
	P2			Trifase Three-phase									
Trifase Three-phase	HP	kW	Trifase Three-phase	m³/h	30	40	50	60	65	70	80		
230/400V-50Hz			3 x 400V	lt/1	500	666	832	1000	1083	1166	1333		
	Prevalenza manometrica totale in m.C.A. - Total head in meters w.c.												
VS 65-1	7,5	5,5	10,3	H (m)	27	25	23	21	20	18	15		
VS 65-2	15	11	20		53	51	47	43	40	37	30		
VS 65-3	25	18,5	32,2		80	76	70	64	60	55	46		
VS 65-4	30	22	39,7		107	101	94	85	80	74	61		
VS 65-5	40	30	53,7		136	129	119	109	102	94	78		



DN 100 4



DIMENSIONI E PESI - DIMENSIONS AND WEIGHTS

TIPO - TYPE	DIMENSIONI mm - DIMENSIONS mm								DIMENSIONI DIMENSIONS mm 			Peso Weight Kg
	A	H	B1	B2	B1 + B2	D1	D2	Flangia Flange	P	L	H	
Trifase Three-phase												
VS 65-1	365	140	561	430	991	260	208	DN 100 4	500	1100	400	110
VS 65-2	365	140	754	490	1244	330	255	DN 100 4	500	1280	400	155
VS 65-3	365	140	836	550	1386	330	255	DN 100 4	500	1420	400	205
VS 65-4	365	140	919	590	1509	360	285	DN 100 4	500	1550	400	260
VS 65-5	365	140	1001	660	1661	400	310	DN 100 4	500	1700	400	345